



zeconex
Solar Battery Storage Solution Provider

ZECONEX LTD

+ 86-755-84615006

sales@zeconex.com

www.zeconex.com

Building ABC, Hankun Hi-tech Industrial Zone, Longteng Road,
Pingdi, Longgang District, Shenzhen, China



ABOUT US

Zeconex is the leading manufacturer of electric vehicle charging systems, and battery energy storage system with solar inverters integrated in the global market, headquartered in Shenzhen, China.



Our wide range of new energy products are manufactured in-house, so we control all aspects of quality and functionality. We can tailor-make ev charger, battery energy storage system and solar inverter to suit your energy projects helping you realize your clean energy ideas.

Our product portfolio consists of Portable Charger, AC Charger, DC Charger, Power Module and Cloud Management System and Mobile APP, Battery Energy Storage System, Portable Power Station, Home Energy Storage System and Inverters, all independently developed by ourselves. We exported to more than 30 countries and regions since 2012.







Our team of ev charger, battery energy storage and inverters manufacturing experts is adept at understanding your energy needs and translating them into ev charger and battery energy storage that will fit right in and last for ages. We use only high-quality and other raw materials to ensure our ev charger, battery energy storage system and inverters are the best in the market.

Our top R&D team both in China and abroad, with rich experience in international protocol, which support us to offer OEM/ODM service for our clients all over the world. Welcome to be our partners.



Welcome to be our partners!

Why Choose Us

- 
10+ years Expert
 More than 10+ years Leading Manufacture in Battery Storage and Solar Inverters Industry.
- 
Quality Control
 Zeconex only focus on the best quality Battery Storage and Solar Inverters products to make sure our business partners relieved and long time working with us.
- 
Production Capacity
 We own and share 3 factories more than 300 employees and over 20,000 square meters area,each factory focus on different products line.
- 
Strong R&D
 We keep on innovation and products developing all days to meet the edge-leading demand of the market. We are good at learning from your suggestion to make the most perfect product.
- 
Lead Time
 We have the ability to do large material stock for our standards products to ensure your fast lead time request.
- 
OEM/ODM Customization
 Our top R&D team both in China and abroad, with rich experience in international protoco, which support us to offer OEM/ODM service for our clients all over the world.

About the exhibition



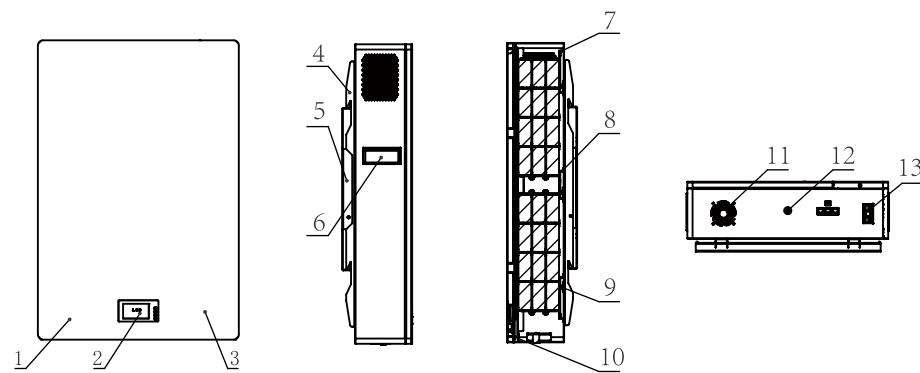
51.2V Energy Storage LiFePO4 Battery-Powerwall-PWG1



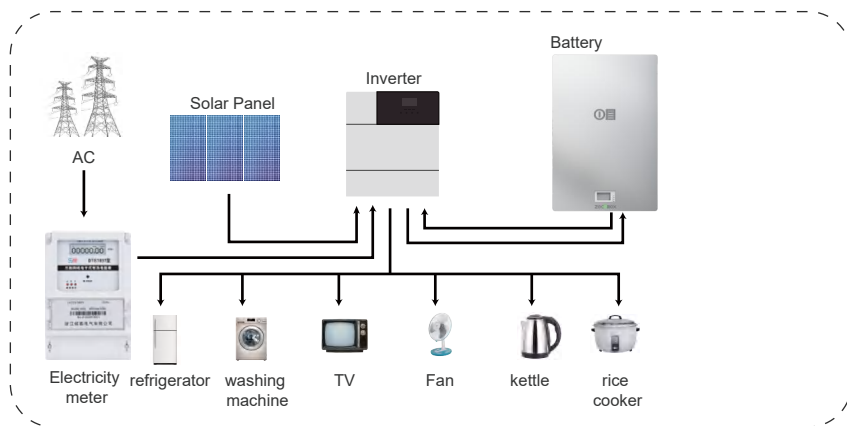
Features

- LCD monitor the energy storage power data and operating status.
- High-quality LiFePO4 battery, safety, deep cycle and long lifespan.
- Air cooling to improve the reliability of the product.
- External main switch to reduce product power consumption and improve safety.
- Foot pads and wall brackets, which can meet the installation and use of different place.
- BMS built inside, over-voltage, over-load, over-temperature protection, etc.
- Compatible, can be connected to different types of loads within the voltage range.
- Support up to 15 modules in parallel.

Structural parts description



1. White plate
2. LCD display
3. Black plate
4. Battery bracket
5. Wall mounted bracket
6. Handle
- 7/8. Module holder
9. Stiffening plate
10. DC fan
11. OFF/ON
12. Communication
13. Output connector



51.2V Energy Storage LiFePO4 Battery-Powerwall-PWG1



Specifications

Model	ZECO-15050BL-PWG1	ZECO-160100BL-PWG1
Battery Energy	5.12kWh	10.24kWh
Nominal Voltage	51.2V	51.2V
Nominal Capacity	100Ah	200Ah
Efficiency	≥96%	≥96%
Inner Resistance	10mΩ	7mΩ
Cell Type	LiFePO ₄	LiFePO ₄
Charge Voltage	58.4V	58.4V
Standard Charging Current	20A	40A
Max.Continuous Charging Current	1000A	100A
Standard Discharge Current	20A	40A
Continuous Discharge Current	100A	100A
Peak Discharge Current	200A (3s)	200A (3s)
Discharge Cut-off Voltage	42V	42V
Charge Temperature Range	0~60°C	0~60°C
Discharge Temperature Range	-10°C~65°C	-10°C~65°C
Storage Temperature Range	-5~40°C	-5~40°C
Storage Humidity	65±20%HR	65±20%HR
Size(LxWxH)	440×170×560mm	440×206×670
Package Size (LxWxH)	625×520×335mm	750×520×385mm
Shell Material	SPCC	SPCC
Net Weight	42Kg	73Kg
Gross Weight	53Kg	91Kg
Package Method	1pcs per carton	1pcs per carton
Cycle Life	>8000 times	>8000 times
Self Discharge	2% per month	2% per month
SOC Indication	LED Light & LCD Screen	LED Light & LCD Screen
Communication Mode	RS485/CAN	RS485/CAN
Matching Inverter	Growatt, Goodwe, Deye, Luxpower, ZECOBEX etc	



High cycle life

>8000 cycles @80% DoD for effectively lower total of ownership cost



Quickly recharge

Save time and increase productivity with less down time thanks to superior charge/discharge efficiency.



Longer service life

Low maintenance batteries with stable chemistry.



Extreme heat tolerance

Suitable for use in a wider range of applications where ambient temperature is unusually high: up to +60°C.



Built in circuit protection

Battery Management System (BMS) is incorporated against abuse.



Lightweight

Lithium batteries provide more Wh/Kg while also being up to 1/3 the weight of its SLA equivalent.



Better storage

Up to 6 months thanks to its extremely low self discharge (LSD) rate and no risk of sulphation.



Function

Support parallel operation

Ultra Thin 90MM Slimline Powerwall Battery-PWG3

Ultra Thin 90MM Slimline Powerwall Battery-PWG3

Specifications

Features

- Scalable battery design for easy expansion, Max. 16pcs in parallel
- BYD blade lithium cell more safety, longer life cycle and more esable energy, upto to more than 10 years working life
- Stylish, ultra-thin Easy connection saving installation time and cost
- Compatible to residential 48V hybrid inverter, and off grid inverter compatible with CAN / RS485 communication interface matching with leading inverter brands
- Villa, Household, farm, base station, field power supply



Model	ZECO-15050BL - PWG3	ZECO-150100BL - PWG3	Remark
Nominal Energy	5120Wh	10240Wh	Standarf charging and discharging mode test
Series parallel connection	16 groups in parallel	16 units in 2 parallels	16S1P
Nominal capacity	100Ah	200Ah	Standard charging and discharging mode test
Nominal voltage	51.2V	51.2V	/
Operating voltage range	40~58.4V	40~58.4V	Temperature range :-20~65 C
Operating temperature (charging)	0~65 C ≤90%ROH	0~55 C ≤90%ROH	
Operating temperature (Discharging)	-20~65 C ≤90%ROH	-20~60 C ≤90%ROH	
Standard charging	Constant current charging: 50A Charging voltage: 58.4A Cut off current: 5A	Constant current charging: 100A Charging voltage: 58.4A Cut off current: 10A	Maximum unit voltage 3.65V
Maximum continuous charing current	Constant current charging: 100A Charging voltage: 58.4A Cut off current: 5A	Constant current charging: 200A Charging voltage: 58.4A Cut off current: 10A	Maximum unit voltage 3.65V
Standard charging	Constant current charging: 50A Cut off voltage: 40V	Constant current charging: 100A Cut off voltage: 40V	T ≥0 C Minimum monomer voltage 2.5V
Maximum continuous discharge current	Constant current charging: 50A Cut off voltage: 40V	Constant current charging: 200A Cut off voltage: 40V	T ≥0 C Minimum monomer voltage 2.5V
Storage temperature	-20~65 C	-20~65 C	Storage environment humidity≤95%ROH, no condensation
Cycle life	The capacity attenuates to 80AH and the number of cycles ≥8000	The capacity attenuates to 160AH and the number of cycles ≥8000	90% DOD, @25±2 C , standardcharging and discharging mode
Monthly self discharge	≥3.5% Per month	≥2% Per month	After three months shipment, the battery will be charged to 40% SOC and stored at @ 25.2 C
Monitoring communication	RS232 / RS485 / CAN	RS232 / RS485 / CAN	
Balanced approach	Passive equalization	Passive equalization	
Shipping capatity	SOC 30~70% (TBD)	SOC 30~70% (TBD)	SOC 30~70% (TBD)
Gross Weight	54Kg	105Kg	
Net Weight	48±2Kg	95±2Kg	
Product Size(LxWxH)	(670x540x90) ±1mm	(700x980x100) ±2mm	
Package Size(LxWxH)	829x649x174mm	1223x816x189mm	



High cycle life

>8000 cycles @80% DoD for effectively lower total of ownership cost



Quickly recharge

Save time and increase productivity with less down time thanks to superior charge/discharge efficiency.



Longer service life

Low maintenance batteries with stable chemistry.



Extreme heat tolerance

Suitable for use in a wider range of applications where ambient temperature is unusually high: up to +45°C.



Built in circuit protection

Battery Management System (BMS) is incorporated against abuse.



Lightweight

Lithium batteries provide more Wh/Kg while also being up to 1/3 the weight of its SLA equivalent.



Better storage

Up to 6 months thanks to its extremely low self discharge (LSD) rate and no risk of sulphation.



Function

Support parallel operation

Slimline Powerwall Battery PWG4



Features

- Ultra thin wall mounted storage design, beautiful and atmospheric, perfectly integrated into the home environment
- Built in high stability BMS, with overcharge, discharge, overcurrent, high and low temperature protection functions
- With LED screen to display voltage, current, temperature and other information, convenient for users to query
- It supports 15 groups of parallel operation at most, and can cope with long-term power consumption environment
- Adapt to mainstream brand inverters in the market to provide users with more choices



High cycle life

>8000 cycles @80% DoD for effectively lower total of ownership cost



Quickly recharge

Save time and increase productivity with less down time thanks to superior charge/discharge efficiency.



Longer service life

Low maintenance batteries with stable chemistry.



Extreme heat tolerance

Suitable for use in a wider range of applications where ambient temperature is unusually high: up to +45°C.



Built in circuit protection

Battery Management System (BMS) is incorporated against abuse.



Lightweight

Lithium batteries provide more Wh/Kg while also being up to 1/3 the weight of its SLA equivalent.



Better storage

Up to 6 months thanks to its extremely low self discharge (LSD) rate and no risk of sulphation.



Function

Support parallel operation

Slimline Powerwall Battery PWG4

Specifications

Model	ZECO2560-PWG4	Remark
Nominal energy	2560Wh	Standard charging and discharging mode test
Series parallel connection	8 strings 1 combined	8S1P
Nominal capacity	100Ah	Standard charging and discharging mode test
Nominal voltage	25.6V	/
Operating voltage range	20~29.2V	Temperature range :-20~65 C
Operating temperature (charging)	0~65 C ≤90%ROH	
Operating temperature (Discharging)	-20~65 C ≤90%ROH	
Standard charging	Constant current charging: 50A Charging voltage: 29.2A Cut off current: 5A	Maximum unit voltage 3.65V
Maximum continuous charging current	Constant current charging: 100A Charging voltage: 29.2A Cut off current: 5A	Maximum unit voltage 3.65V
Standard discharge	Constant current discharge: 50A Cut off voltage: 20V	T ≥0 C Minimum monomer voltage 2.5V
Maximum continuous discharge current	Constant current discharge: 100A Cut off voltage: 20V	T ≥0 C Minimum monomer voltage 2.5V
Storage temperature	-20~65 C	Storage environment humidity≤95%ROH, no condensation.
Cycle life	Capacity decay to 80Ah, Number of cycles ≥ 6000;	90% DOD, @25±2 C , standard charging and discharging mode
Monthly self discharge	≤2.5% Per month	After three months shipment, the battery will be charged to 40% SOC and stored at @ 25.2 C
Monitoring communication	RS232/RS485/CAN	
Balanced approach	Passive equalization	
Shipping capacity	SOC 30~70% (TBD)	SOC 30~70% (TBD)
Weight	24.3±2Kg	
Size(LxWxH)	(375x92.5x560) ±1mm	

High Voltage LiFePO4 Battery Storage System-HVG1

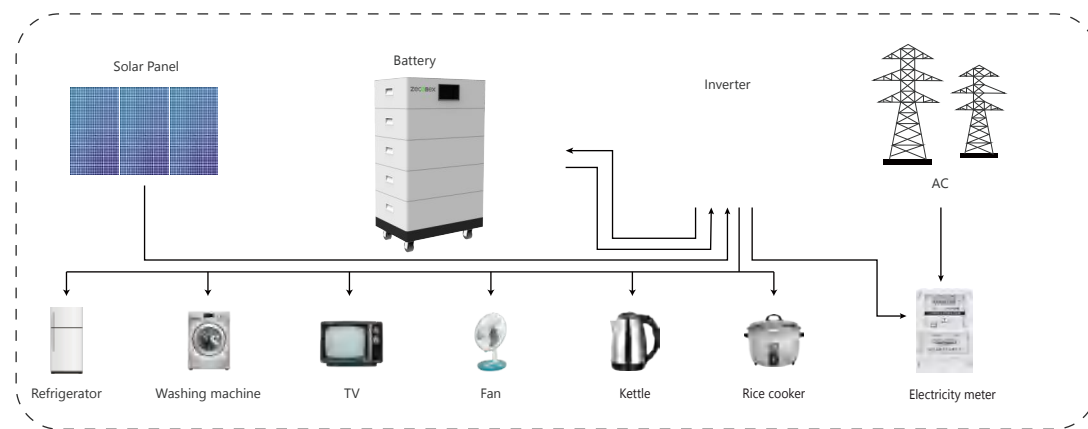


Features

- Capable of High-Powered Emergency-Backup and Off-Grid Functionality
- Highest Efficiency Thanks to a Real High-Voltage Series Connection
- The Patented Modular Plug Design Requires no Internal Wiring and Allows for Maximum Flexibility and Ease of Use
- Grand A Lithium Iron Phosphate (LFP) Battery: Maximum Safety, Life Cycle, and Power
- Compatible With Leading High Voltage Battery Inverters
- Highest Safety Standards



Structural parts description



48V Energy Storage LiFePO4 Battery-HVG1



Specifications

Datasheet	ZECO-45100BL-HVG1	ZECO-60100BL-HVG1	ZECO-75100BL-HVG1	ZECO-90100BL-HVG1	ZECO-105100BL-HVG1	ZECO-105100BL-HVG1
System Demo						
Battery Module	ZECO-15100BL-HV					
Number of Modules	3	4	5	6	7	8
Energy Capacity	14.4kWh	19.2kWh	24kWh	28.8kWh	33.6kWh	38.4kWh
Energy Capacity	100Ah	100Ah	100Ah	100Ah	100Ah	100Ah
Battery Voltage	144V	192V	240V	288V	336V	384V
Size(LxWxH)	570×380×833mm	570×380×1000mm	570×380×1167mm	570×380×1334mm	570×380×1501mm	570×380×1668mm
Weight	148Kg	189Kg	230Kg	271Kg	312Kg	353kg
Standard Charge/Discharge Current	20A	20A	20A	20A	20A	20A
Battery Type	Lithium Iron Phosphate (LFP)					
Nominal Voltage	48V					
Operating voltage Range	40- 54.7V					
IP Protection	IP65					
Installation	Floor installation					
Operation Temperature	-10~60°C					
BMS Monitoring Parameters	SOC, System voltage,current, cell voltage, cell temperature, PCBA temperature measurement					
Communication Port	CAN					
Waranty: 5 years /10 years	Yes/optional					



High cycle life
>8000 cycles @80% DoD for effectively lower total of ownership cost



Quickly recharge
Save time and increase productivity with less down time thanks to superior charge/discharge efficiency.



Longer service life
Low maintenance batteries with stable chemistry.



Extreme heat tolerance
Suitable for use in a wider range of applications where ambient temperature is unusually high: up to +60°C.



Built in circuit protection
Battery Management System (BMS) is incorporated against abuse.



Lightweight
Lithium batteries provide more Wh/Kg while also being up to 1/3 the weight of its SLA equivalent.



Better storage
Up to 6 months thanks to its extremely low self discharge (LSD) rate and no risk of sulphation.



Function
Support parallel operation

High Voltage LiFePO4 Battery Storage System - HVG5



Features

- Capable of High-Powered Emergency-Backup and Off-Grid Functionality
- Highest Efficiency Thanks to a Real High-Voltage Series Connection
- The Patented Modular Plug Design Requires no Internal Wiring and Allows for Maximum Flexibility and Ease of Use
- Grand A Lithium Iron Phosphate (LFP) Battery: Maximum Safety, Life Cycle, and Power
- Compatible With Leading High Voltage Battery Inverters
- Highest Safety Standards



High cycle life

>8000 cycles @80% DoD for effectively lower total of ownership cost



Quickly recharge

Save time and increase productivity with less down time thanks to superior charge/discharge efficiency.



Longer service life

Low maintenance batteries with stable chemistry.



Extreme heat tolerance

Suitable for use in a wider range of applications where ambient temperature is unusually high: up to +45°C.



Built in circuit protection

Battery Management System (BMS) is incorporated against abuse.



Lightweight

Lithium batteries provide more Wh/Kg while also being up to 1/3 the weight of its SLA equivalent.



Better storage

Up to 6 months thanks to its extremely low self discharge (LSD) rate and no risk of sulphation.



Function

Support parallel operation

High Voltage LiFePO4 Battery Storage System - HVG5



Specifications

Model	ZECO1221-HVG5	ZECO1628-HVG5	ZECO2035-HVG5	ZECO2442-HVG5	ZECO2849-HVG5	ZECO3256-HVG5	ZECO3663-HVG5
Combination diagram							
Number of PDUs	1						
Number of battery packs	3	4	5	6	7	8	9
Rated voltage	230.4V	307.2V	384V	460.8V	537.6V	614.4V	691.2V
Operating voltage range	201.6~262.8V	268.8~350.4V	336~438V	403.2~525.6V	470.4~613.2V	537.6~700.8V	604.8~788.4V
Rated Capacity	53Ah						
Rated charge capacity	12.21kWh	16.28kWh	20.35kWh	24.42kWh	28.49kWh	32.56kWh	36.63kWh
Combination method	1P72S	1P96S	1P120S	1P144S	1P168S	1P192S	1P216S
Charging voltage	252V	336V	420V	504V	588V	672V	756V
Charging current	Continuous: 25A Maximum:50A						
Discharge current	Maximum continuous current:50A						
Self-discharge rate	≤2% monthly						
Equalization method	Passive equalisation						
Parallel mode	Automatic coding						
Charging temperature	0 C ~+55 C						
Discharge temperature	-20 C ~+60 C						
Protection level	IP65						
Communication method	CAN/RS485/WIFI/4G/Bluetooth						
Dimension(LxWxH)	1460x735x140	1820x735x140	2180x735x140 820x735x140	1460x735x140 1180x735x140	1820x735x140 1180x735x140	2180x735x140 1540x735x140	1460x735x140 1180x735x140 1180x735x140
Weight	135Kg	175Kg	220Kg	263Kg	303Kg	343Kg	383Kg
DOD	≤90%						
Cycle life	>6000cyc@90%DOD,25 C , 0.5C						
Certification	UN38.3, CE, IEC62619, ROHS						

All-in-one Residential Energy Storage System-S2



Features

- Vertical industry integration ensures more than >8000 cycles with 80% DoD.
- Integrated inverter design, easy to use and quick to install. Small size, minimizing installation time and cost Compact and stylish design suitable for your sweet home environment.
- The inverter has a variety of working modes. Whether it is used for main power supply in the area without electricity or backup power supply in the area with unstable power to deal with sudden power failure, the system can respond flexibly.
- A variety of charging methods, which can be charged with photovoltaic or commercial power, or both at the same time
- You can use 4 batteries in parallel at the same time, and can provide a maximum of 20kwh for your use.



High cycle life
>8000 cycles @80% DoD for effectively lower total of ownership cost



Quickly recharge
Save time and increase productivity with less down time thanks to superior charge/discharge efficiency.



Longer service life
Low maintenance batteries with stable chemistry.



Extreme heat tolerance
Suitable for use in a wider range of applications where ambient temperature is unusually high: up to +45°C.



Built in circuit protection
Battery Management System (BMS) is incorporated against abuse.



Lightweight
Lithium batteries provide more Wh/Kg while also being up to 1/3 the weight of its SLA equivalent.



Better storage
Up to 6 months thanks to its extremely low self discharge (LSD) rate and no risk of sulphation.


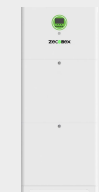


Function
Support parallel operation

51.2V Energy Storage LiFePO4 Battery-S2

Specifications

Model	ZECO-AIOV05C-220V
Rated Output Power	5,000W
Max. Peak Power	10,000VA
Load Capacity of Motor	4HP
Wave Form	PSW (Pure Sine Wave)
Rated Output Voltage	220Vac (single-phase)
Max. Parallel Capacity	2units (up to10kW)
Output Mode	Off-grid / Hybrid / On-grid
Solar Charge Type	MPPT
Max. Solar Array Power	5,500W
Max. Solar Open Circuit Voltage	500Vdc
Input Voltage Range	90~280Vac
Bypass Overload Current	40A
Max. Solar Charging Current	100A
Max. Grid / Generator Charging Current	60A
Dimension(LxWxH)	400x580x145mm
Weight	18Kg

Model	ZECO-AIO48V05-S2	ZECO-AIO48V10-S2
Battery Module		
Battery Power	5.12kWh (5.12kWh Batteryx1)	10.24kWh (5.12kWh Batteryx2)
Rated Voltage	51.2V	
Rated Capacity	100Ah	
Battery Type	Prismatic LFP	
Cycling Life Span	≥8000 (80%DOD, 0.5C, 25°C)	
Max. Parallel Capacity	2 units (up to 10.24kWh)	
Dimension(LxWxH)	Inverter: 1x400x580x145mm Battery: 1x480x580x145mm	Inverter: 1x400x580x145mm Battery: 2x480x580x145mm
Weight	73Kg	118Kg
Standard	UN38.3, MSDS, UL1973, IEC62619:2017,EN IEC61000-3-2, EN IEC61000-6-1,RoHS	

All-in-one Residential Energy Storage System-S1

51.2V Energy Storage LiFePO4 Battery-S1

Specifications

Model	ZECO-AIOS05C-220V
Rated Output Power	5,000W
Max. Peak Power	10,000VA
Load Capacity of Motor	4HP
Wave Form	PSW (Pure Sine Wave)
Rated Output Voltage	220Vac (single-phase)
Max. Parallel Capacity	2units (up to10kW)
Output Mode	Off-grid / Hybrid / On-grid
Solar Charge Type	MPPT
Max. Solar Array Power	5,500W
Max. Solar Open Circuit Voltage	500Vdc
Input Voltage Range	90~280Vac
Bypass Overload Current	40A
Max. Solar Charging Current	100A
Max. Grid / Generator Charging Current	60A
Dimension(LxWxH)	130x480x330mm
Weight	13Kg

Features

- Vertical industry integration ensures more than >8000 cycles with 80% DoD.
- Integrated inverter design, easy to use and quick to install. Small size, minimizing installation time and cost Compact and stylish design suitable for your sweet home environment.
- The inverter has a variety of working modes. Whether it is used for main power supply in the area without electricity or backup power supply in the area with unstable power to deal with sudden power failure, the system can respond flexibly.
- A variety of charging methods, which can be charged with photovoltaic or commercial power, or both at the same time
- You can use 4 batteries in parallel at the same time, and can provide a maximum of 20kwh for your use.



High cycle life

>8000 cycles @80% DoD for effectively lower total of ownership cost



Quickly recharge

Save time and increase productivity with less down time thanks to superior charge/discharge efficiency.



Longer service life

Low maintenance batteries with stable chemistry.



Extreme heat tolerance

Suitable for use in a wider range of applications where ambient temperature is unusually high: up to +45°C.



Built in circuit protection

Battery Management System (BMS) is incorporated against abuse.



Lightweight

Lithium batteries provide more Wh/Kg while also being up to 1/3 the weight of its SLA equivalent.



Better storage

Up to 6 months thanks to its extremely low self discharge (LSD) rate and no risk of sulphation.



Function

Support parallel operation

Model	ZECO-AIO48V05-S1	ZECO-AIO48V08-S1	ZECO-AIO48V10-S1	ZECO-AIO48V13-S1	ZECO-AIO48V15-S1	ZECO-AIO48V20-S1
Battery Module						
Battery Power	5.12kWh (2.56kWh Batteryx2)	7.68kWh (2.56kWh Batteryx3)	10.24kWh (2.56kWh Batteryx4)	12.80kWh (2.56kWh Batteryx5)	15.36kWh (2.56kWh Batteryx6)	20.48kWh (2.56kWh Batteryx8)
Rated Voltage	51.2V					
Rated Capacity	50Ah					
Battery Type	Prismatic LFP					
Cycling Life Span	≥8000 (80%DOD, 0.5C, 25°C)					
Dimension(LxWxH)	480x330x450mm	480x330x585mm	480x330x720mm	480x330x855mm	480x330x990mm	480x330x1260mm
Weight	66.5Kg	91.5Kg	116.5Kg	141.5Kg	166.5Kg	216.5Kg
Standard	UN38.3, MSDS, UL1973, IEC62619:2017, EN IEC61000-3-2, EN IEC61000-6-1,RoHS					

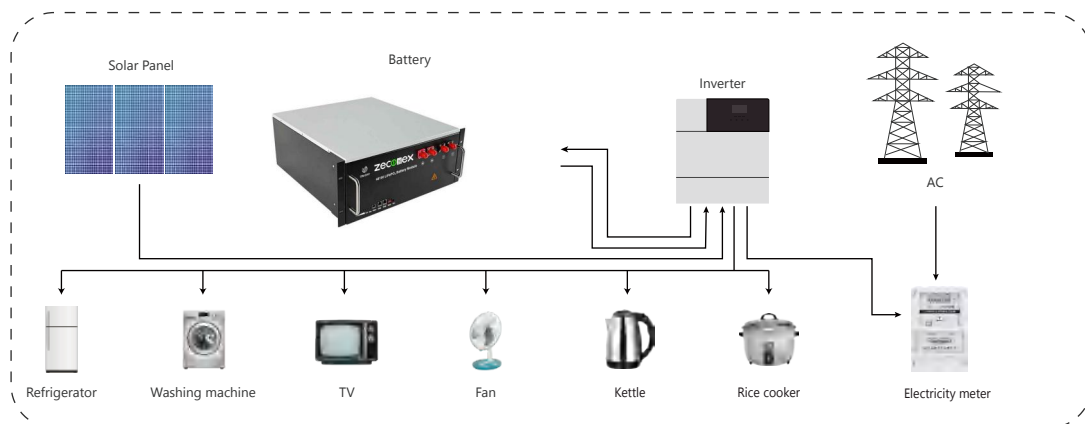
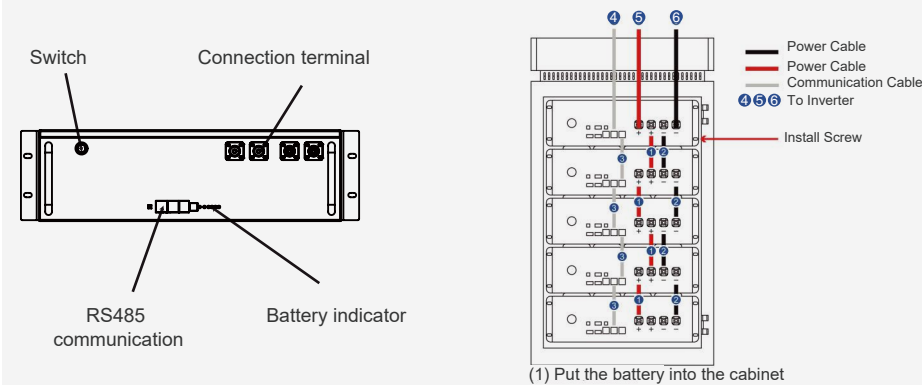
LiFePO4 Energy Storage Battery-Rack-BR



Features

- Standardized design: standard 3U and 4U case, good applicability
- In parallel to enlarge energy: Add the current limiting module, support multiple battery parallel use, expand the battery capacity, meet the high energy demand of customers.
- Intelligent lithium battery management system: With RS485 communication, you can monitor the battery status at any time and set protection parameters such as charge and discharge according to customers' requirements.
- Warning function: Warning functions such as overcharge, overdischarge, overcurrent, high temperature and low temperature can greatly reduce the potential safety hazard.
- Balancing: Automatic collection of battery single series voltage, pressure difference up to 30mV (can be set), automatic start equalization function.

Structural parts description



LiFePO4 Energy Storage Battery-Rack-BR



Specifications

Model	ZECO-15050BL-BR	ZECO-150100BL-BR
Battery Energy	2.4kWh	4.8kWh
Nominal Voltage	48V	48V
Nominal Capacity	50Ah	100Ah
Efficiency	≥96%	≥96%
Inner Resistance	10mΩ	7mΩ
Cell Type	LiFePO ₄	LiFePO ₄
Charge Voltage	54.71V	54.71V
Standard Charging Current	10A	20A
Max.Continuous Charging Current	50A	100A
Standard Discharge Current	25A	50A
Continuous Discharge Current	50A	100A
Peak Discharge Current	100A (3s)	200A (3s)
Discharge Cut-off Voltage	45.5V	45.5V
Charge Temperature Range	0~60°C	0~60°C
Discharge Temperature Range	-20°C~65°C	-20°C~65°C
Storage Temperature Range	-5~40°C	-5~40°C
Storage Humidity	65±20% HR	65±20% HR
Size(LxWxH)	453×493×133mm	520×241×175mm
Package Size (LxWxH)	530×480×230mm	530×540×260mm
Shell Material	SPCC	SPCC
Net Weight	27.5Kg	41Kg
Gross Weight	39.5Kg	47Kg
Package Method	1pcs per carton	1pcs per carton
Cycle Life	>8000 times	>8000 times
Self Discharge	2% per month	2% per month
SOC Indication	LED Light	LED Light
Communication Mode	RS485	RS485/CAN
Matching Inverter	Growatt, Goodwe, Deye, Luxpower, ZECOMEX etc	



High cycle life

>8000 cycles @80% DoD for effectively lower total of ownership cost



Quickly recharge

Save time and increase productivity with less down time thanks to superior charge/discharge efficiency.



Longer service life

Low maintenance batteries with stable chemistry.



Extreme heat tolerance

Suitable for use in a wider range of applications where ambient temperature is unusually high: up to +60°C.



Built in circuit protection

Battery Management System (BMS) is incorporated against abuse.



Lightweight

Lithium batteries provide more Wh/Kg while also being up to 1/3 the weight of its SLA equivalent.



Better storage

Up to 6 months thanks to its extremely low self discharge (LSD) rate and no risk of sulphation.



Function

Support parallel operation

Portable Power Station-PPS

Portable Power Station-PPS

Specifications

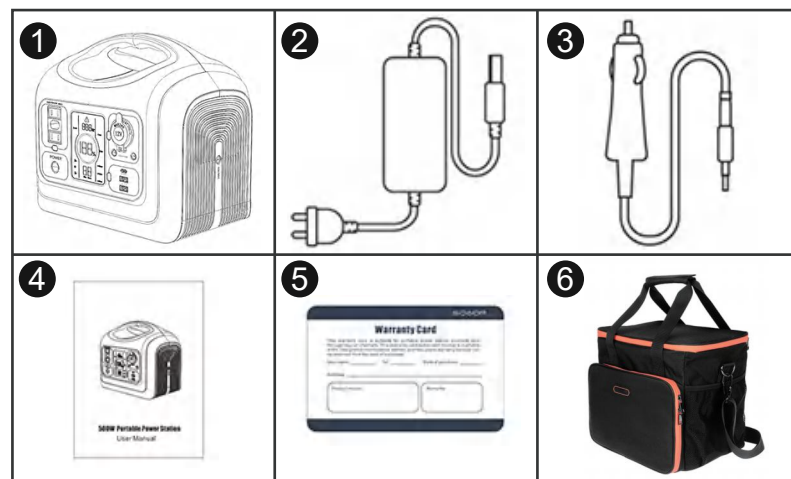
Description	Parameters	
Mode	ZECO-PPS-600	ZECO-PPS-1200
Rated voltage	100~120Vac/220~240Vac	
Rated power	600W	1200W
Peak power	1000W	3600W
Frequency	50/60Hz	
Rated voltage	12V	
Rated current	10A	
USB-A output	5V/3A; 9V/1.5A (18W Max)	
USB-C output	5V/3A; 9V/3A; 12A/3A; 15V/ 3A; 20V/3A (60W Max)	
USB-C output	5V/3A; 9V/3A; 12A/1.5A (18W Max)	
LED Light	7W Three Working Mode	5W Three Working Mode
Input voltage	12V-30V	
Input power	100W Max	200W Max
Rated capacity	595Wh	992Wh
Rated voltage	19.2Vdc	32Vdc
Battery cell type	LiFePO ₄	
Waterproof	IP21	
Working temperature	0-40 °C	
Size(LxWxH)	267x197x247mm	330x220x289mm
Net weight	6.8Kg	11Kg



Features

- LCD monitor the energy storage power data and operating status.
- High-quality LiFePO₄ battery, safety, deep cycle and long lifespan.
- Air cooling to improve the reliability of the product.
- External main switch to reduce product power consumption and improve safety.
- Foot pads and wall brackets, which can meet the installation and use of different place.

Product accessories



1. 1800W Portable power station
2. Power adapter
3. Car charger to DC7909 line
4. Use manual
5. Two-year warranty card
6. Portable Hand Bag

PRODUCT	Laptop (56W)	Mobile Phone (12.4W)	Camera (28W)	Speaker (20W)	Drone (22.2W)	Car refrigerator (65W)	Tablet (30W)	Outdoor light (4W)
ZECO-600 (600W)	Discharge 10 hours	Discharge 48 hours	Discharge 21 hours	Discharge 30 hours	Discharge 27 hours	Discharge 9 hours	Discharge 20 hours	Discharge 150 hours
ZECO-1200 (1200W)	Discharge 21 hours	Discharge 96 hours	Discharge 42 hours	Discharge 60 hours	Discharge 54 hours	Discharge 18 hours	Discharge 40 hours	Discharge 300 hours

Portable Power Station-PPS

Portable Power Station-PPS

Specifications

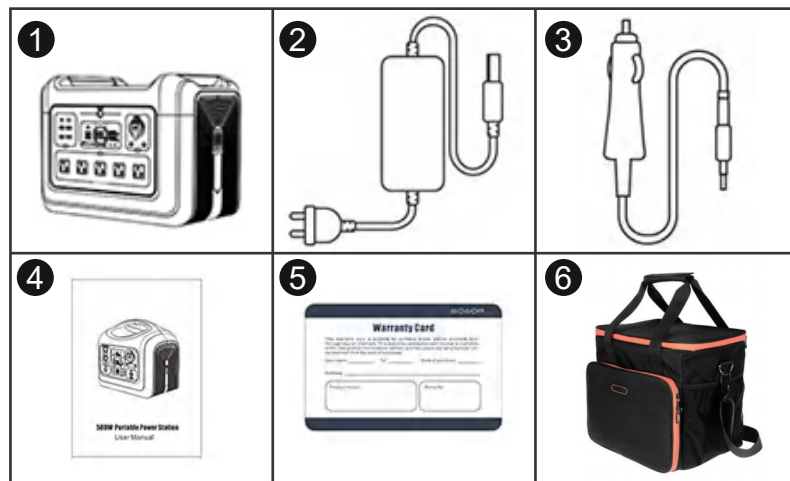
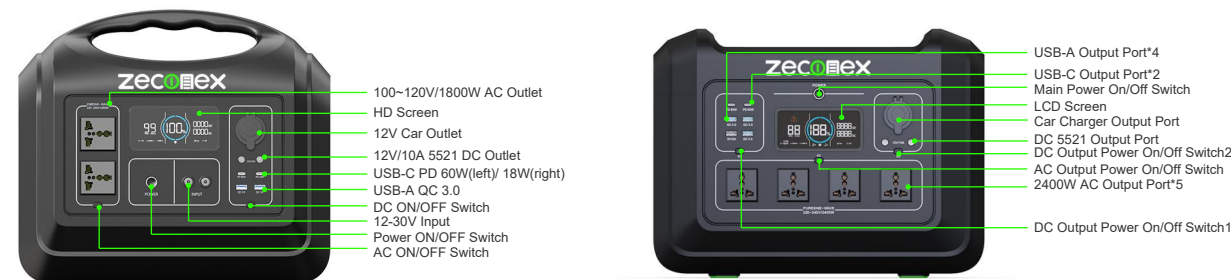
Description	Parameters	
Mode	ZECO-PPS-1800	ZECO-PPS-2400
Rated voltage	100~120Vac/220~240Vac	
Rated power	1800W	2400W
Peak power	4000W	4400W
Frequency	50/60Hz	
Rated voltage	12V	
Rated current	10A	
USB-A output	5V/3A; 9V/1.5A (18W Max)	
USB-C output	5V/3A; 9V/3A; 12A/3A; 15V/3A; 20V/3A (60W Max)	
USB-C output	5V/3A; 9V/3A; 12A/1.5A (18W Max)	
LED Light	5W Three Working Mode	7W Three Working Mode
Input voltage	12V-30V	
Input power	2x200W Max	2x24V/200W Max
Rated capacity	1448Wh	/
Rated voltage	32Vdc	/
Battery cell type	LiFePO ₄	
Waterproof	IP21	
Working temperature	0-40 °C	
Size(LxWxH)	385x243x340mm	420x270x313mm
Net weight	15Kg	20.7Kg



Features

- LCD monitor the energy storage power data and operating status.
- High-quality LiFePO₄ battery, safety, deep cycle and long lifespan.
- Air cooling to improve the reliability of the product.
- External main switch to reduce product power consumption and improve safety.
- Foot pads and wall brackets, which can meet the installation and use of different place.

Product accessories



1. 1800W Portable power station
2. Power adapter
3. Car charger to DC7909 line
4. Use manual
5. Two-year warranty card
6. Portable Hand Bag

Handbag Parameters

Dimension	390*440*65mm
Net weight	1Kg
Suitable for	600W/1200W portable power station

PRODUCT	Laptop (56W)	Mobile Phone (12.4W)	Camera (28W)	Speaker (20W)	Drone (22.2W)	Car refrigerator (65W)	Tablet (30W)	Outdoor light (4W)
ZECO-1800 (1800W)	Discharge 32 hours	Discharge 145 hours	Discharge 64 hours	Discharge 90 hours	Discharge 81 hours	Discharge 27 hours	Discharge 60 hours	Discharge 450 hours
ZECO-2400 (2400W)	Discharge 43 hours	Discharge 193 hours	Discharge 85 hours	Discharge 120 hours	Discharge 108 hours	Discharge 36 hours	Discharge 80 hours	Discharge 600 hours

Solar Generator for Portable Power Station

Solar Generator for Portable Power Station

Technical Specification

Type	Single Crystal Silicon	
Output Power	100W	220W
Cell Efficiency	20%-22%	20%
Power Voltage	19.8V	19.8V
Power Current	5A	12.1A
DC Output	18V/100W	18V/220W
Dimensions	415x370x35 (folded) 1670x415x5 (unfolded)	655x520x35 (folded) 2290x520x5 (unfolded)
Net weight	4.75Kg	10.5Kg
Waterproof	IPX4	IPX4
Operating Temperature Range	-10~70 C	-10~70 C
Packing Dimensions(LxWxH)	480 x 90 x 45mm	750 x 640 x 140mm

Description

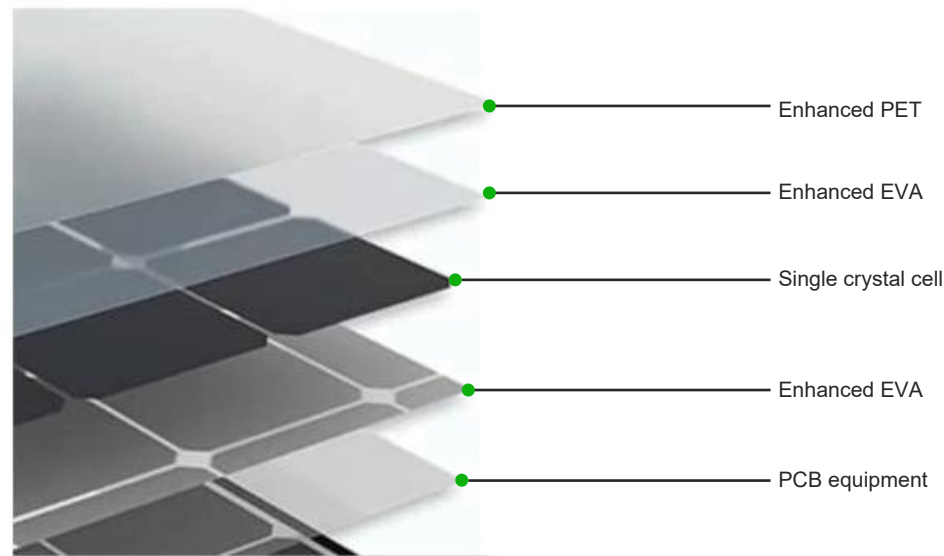
Made up of efficient monocrystalline silicon cells, it can recharge portable power stations, and keep your equipment running without interruption when connected to our portable power station. solar panel, high conversion efficiency up to 20%, pair with 600W to get your solar generator kit. Suited for outdoor adventures or emergency back up for blackouts. The Solar Panel is IP65 water-resistant that will protect from water splashing. solar panel with kickstand: Foldable design and weighs only 5.1kg. Adjust the angle with the built-in kickstand.

Application

- Recharge for Power Station

High Conversion Efficiency

Multiple protection



Package

